

Altoids Pinhole Project

Troubleshooting

These are the most common issues students have with pinhole cameras.

Over Exposed:

The image was exposed for too long.



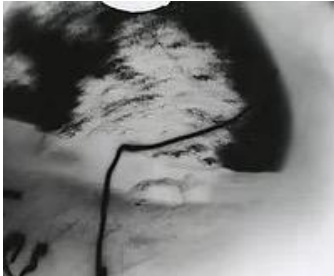
Under Exposed:

The image was not exposed for enough time.



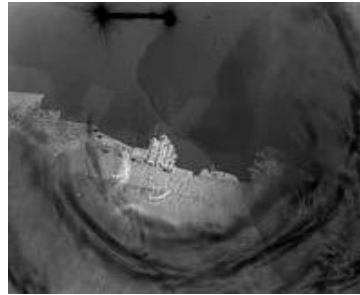
Camera Movement:

Your camera moved during the exposure. This will result in your subject being blurry (likewise if your subject moves, this will happen).



Lens Flare:

This occurs when you point your camera directly towards a strong light source.



Tong Marks

This occurs in the darkroom. If you press directly on your image with the tongs, it will leave marks like this.



Developing lines:

This occurs when you print your image in the darkroom. If your print is not submerged completely in the developer, the values will be uneven. There is no fixing this.



Off Center Negative:

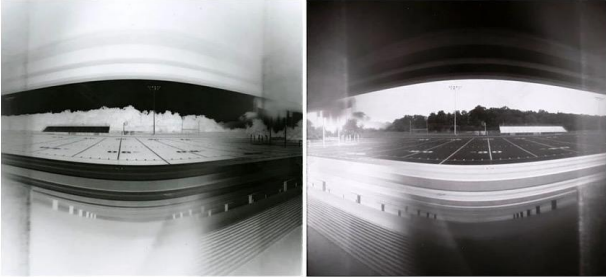
Your paper is not lined up with your aperture. Remember that your image is upside down in the camera.



Altoids Pinhole Assignment Requirements:

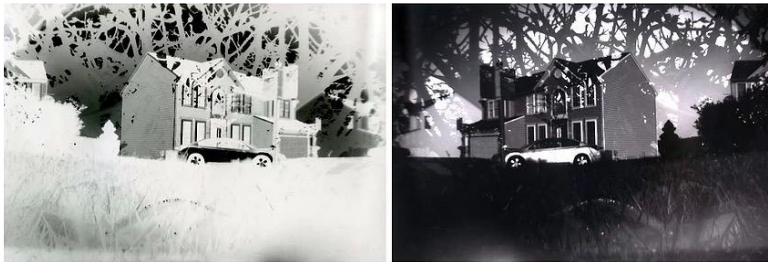
Requirement 1: Distortion (1 negative & 1 positive)

Distortion naturally occurs with pinhole photographs. Your distortion photograph needs to be an exaggerated example of distortion. This can include straight lines being bent or proportions being skewed. You can do this by putting your camera close to your subject, changing the point of view or bending your paper in your camera.



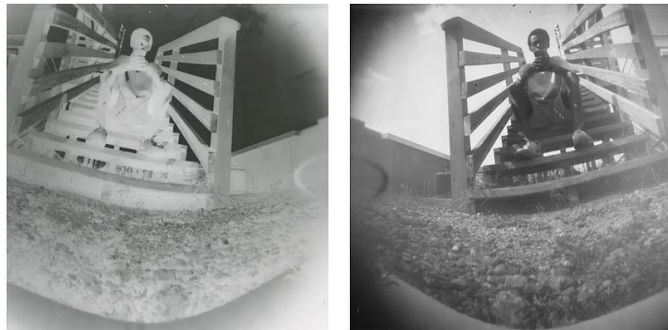
Requirement 2: Double Exposure (1 negative & 1 positive)

Take 2 photographs on the same paper negative. Be sure to experiment with times. What will happen if your first exposure is 25% of the time and your second exposure is 75% of the time?



Requirement 3: Self Portraits (1 negative & 1 positive)

Use yourself as the subject.

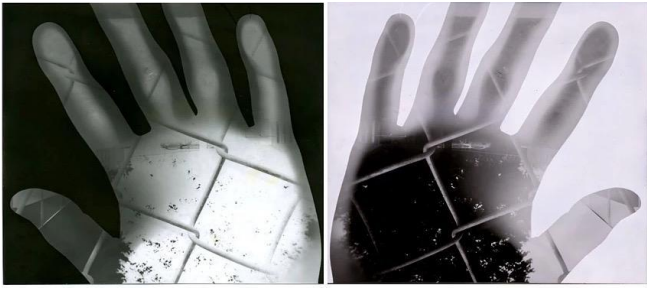


Requirement 4: Photogram Double Exposure (1 negative & 1 positive)

1. In the darkroom, use objects to create a photogram (do not run it through the chemicals).

2. Load the paper negative into your camera and shoot your image.

(You may not use hands to create your photogram, the image below is an example only)



Pinhole Rubric

		Excellent	Good	Average	Needs Improvement
Assignment Goals	<input type="checkbox"/> Assignment is on time <input type="checkbox"/> Includes ALL 4 required portions of the assignment (distortion, double exposure, self portrait, photogram double exposure) <input type="checkbox"/> Includes ALL 8 photos <input type="checkbox"/> Darkroom, time, and materials were used wisely.	60	59-55	54-50	49 or less
Originality	<input type="checkbox"/> Demonstrates good problem solving skills <input type="checkbox"/> Photos are original and creative	20	19-17	16-13	12 or less
Aesthetics	<input type="checkbox"/> Elements of art and principles of design work well to create a successful composition <input type="checkbox"/> Project is free of mistakes that distract from the unity and effectiveness of the whole <input type="checkbox"/> Photos are interesting	20	19-17	16-13	12 or less
Total					