

ISOMETRIC SPACE STATIONS

An Isometric Drawing is a pictorial representation of an object in which all three dimensions are drawn at full scale rather than foreshortening them to the true projection.

Download Isometric Grid paper here:

https://www.printablepaper.net/preview/IsometricDots-half_inch

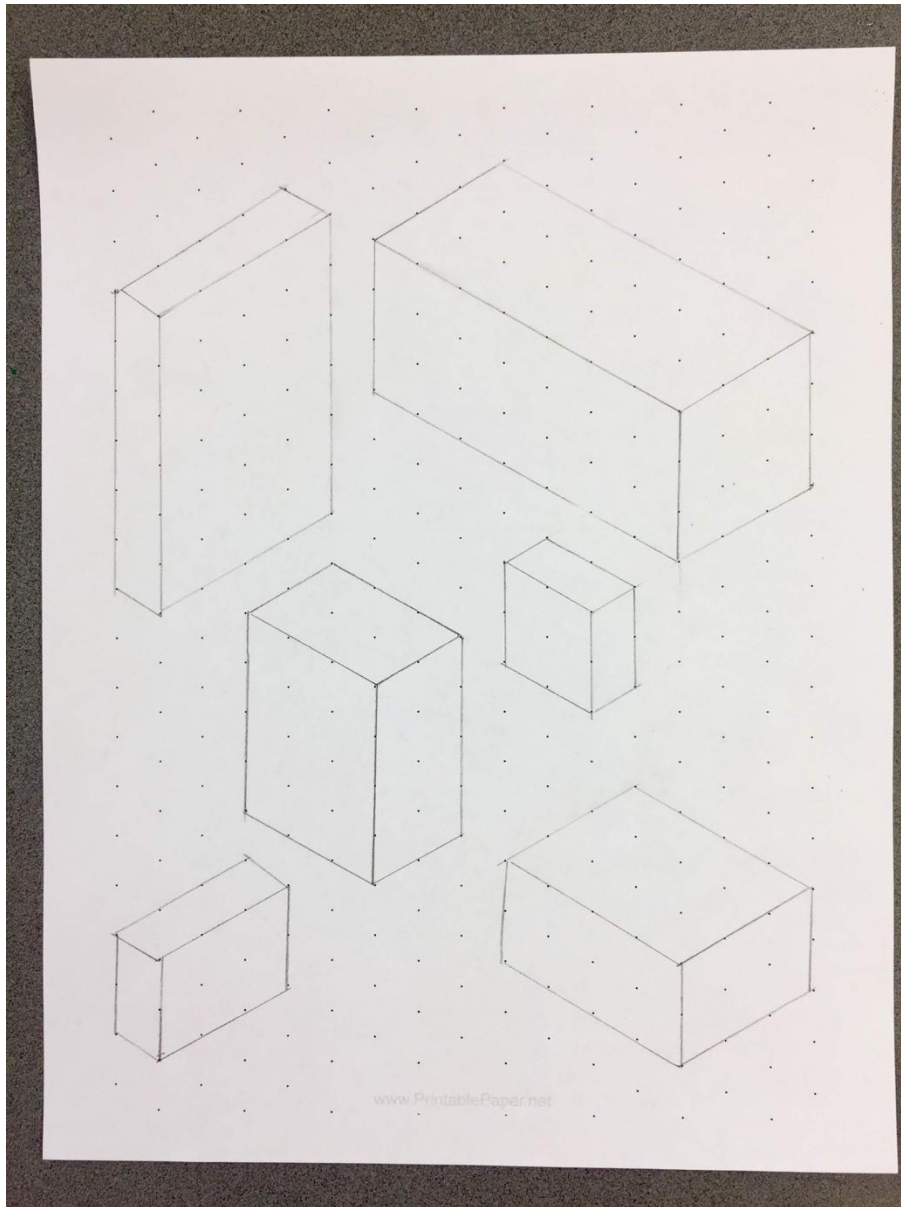
Watch a cool tutorial on this style of drawing here, courtesy of Art Teacher Bethany Lynn!

<https://www.youtube.com/watch?v=KdxL3lpO4JA&t=22s>

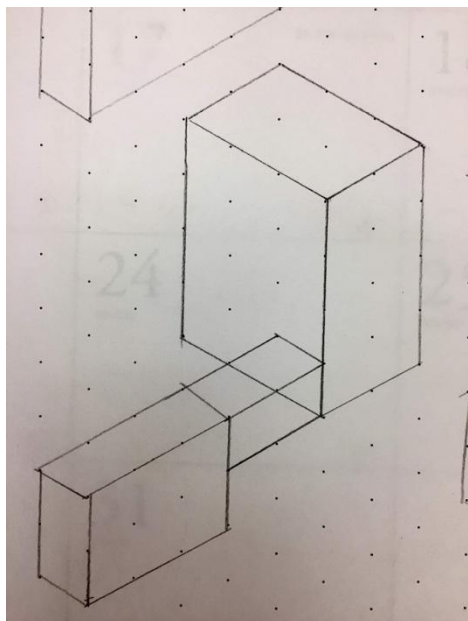
Using a ruler and a sharp pencil, lightly draw a minimum of Five 3D units on the Isometric grid paper. BE SURE TO HOLD THE PAPER VERTICALLY.

GOALS:

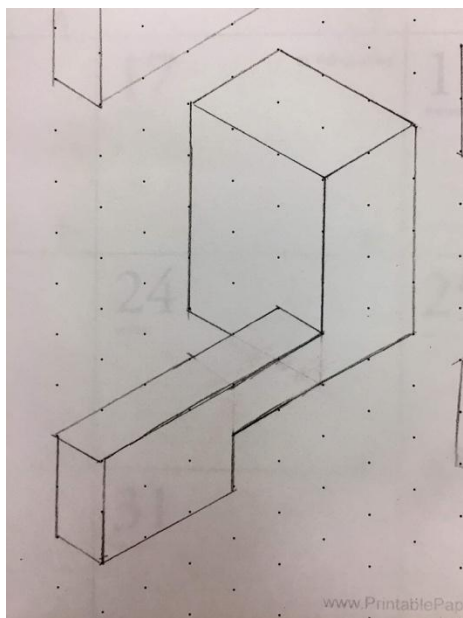
- Units should not touch.
- Units should be of different sizes, (consider height, width, depth.)
- Try to fill a lot of the space on the paper
- All your units must fit within the framework of the dots. (No “half” shapes)
- DRAW LIGHTLY!
- EVERY LINE SEGMENT MUST BEGIN AND END ON A DOT!



NEXT, Add “connectors”, bridges, towers and windows in your units. You might find that you will need to erase some segments occasionally! Example:

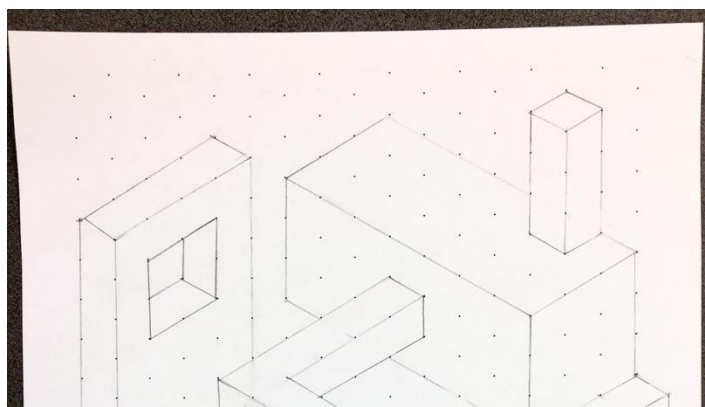


becomes...



GOALS:

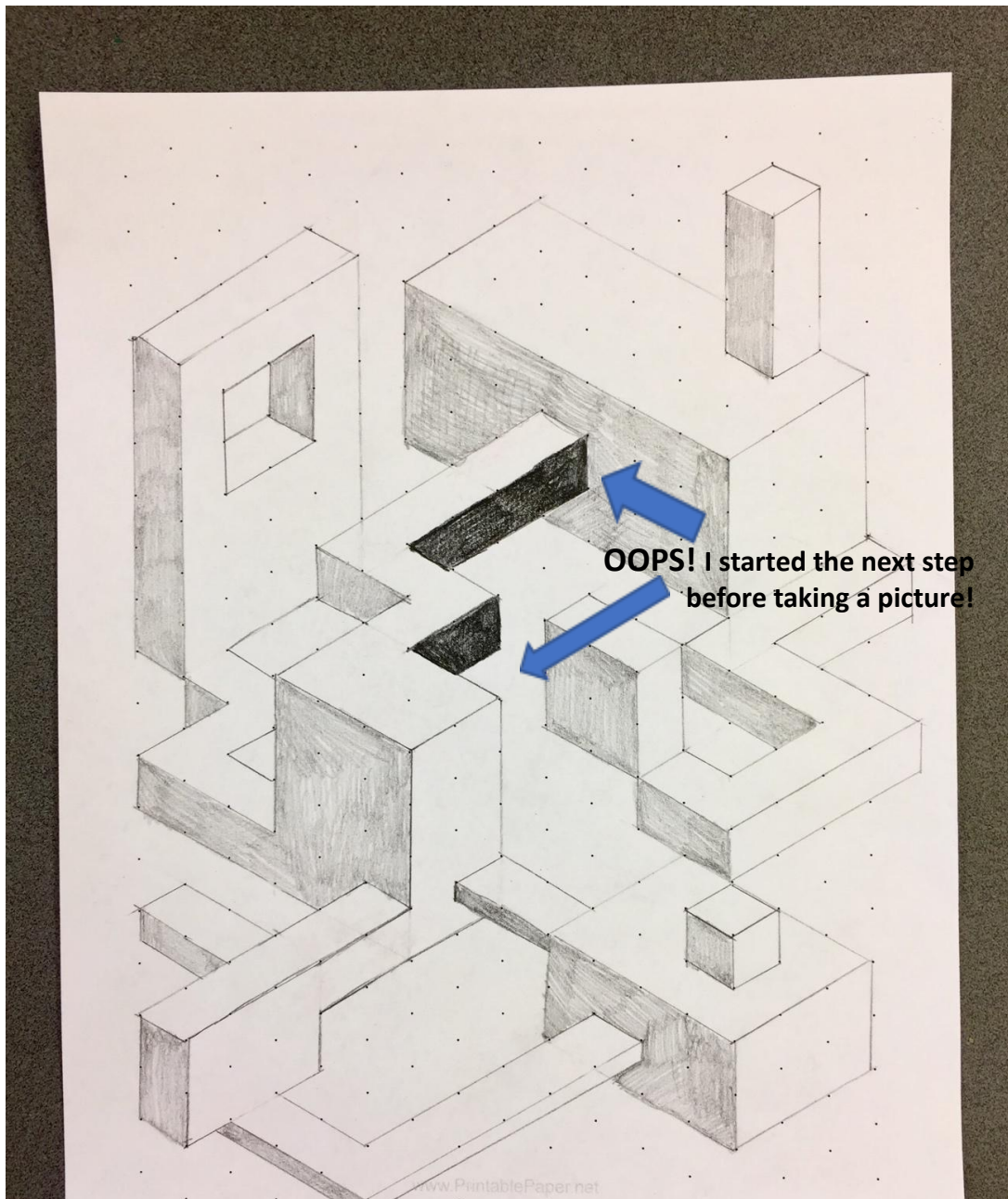
- All units should be connected to at least one other unit.
- You must have at least one “window” or opening somewhere.
- Draw LIGHTLY!!!



HINT: you can make
"Thin" bridges by
estimating an
appropriate spacing
between dots.

Page 2

NEXT, shade the left-facing surfaces of all your units, bridges, connectors and towers with regular # 2 pencil, *OR: a light colored pencil.*

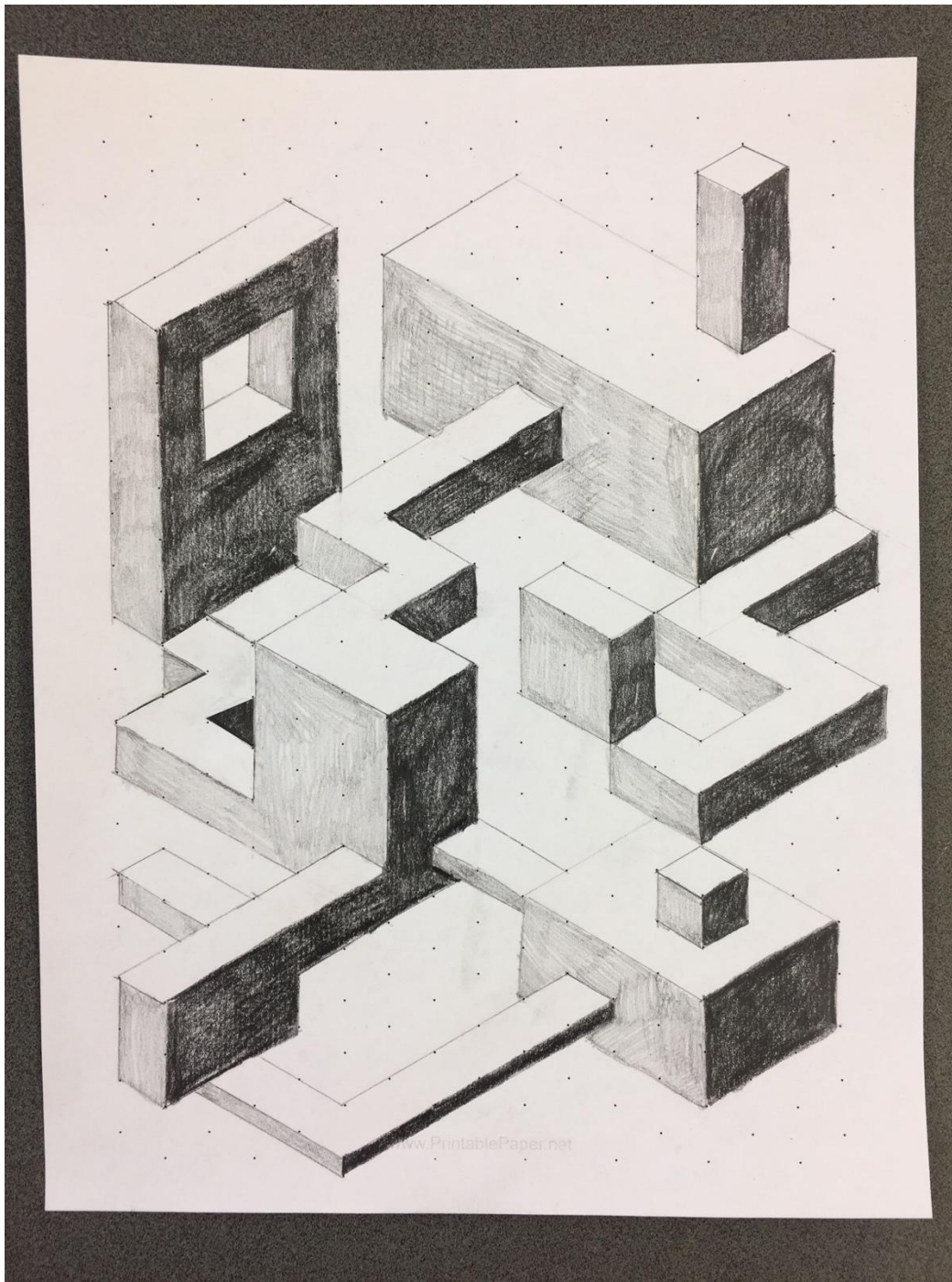


GOALS:

- Use your cover sheet to rest your hand on to prevent smudging
- Stay within the lines, but shade neatly all the way to the lines
- Layer your strokes to create smooth, even tones. (NOT LIKE THE ABOVE EXAMPLE)

Page 3

NEXT, Shade all the right-facing surfaces with Ebony pencil, *OR a dark colored pencil.*

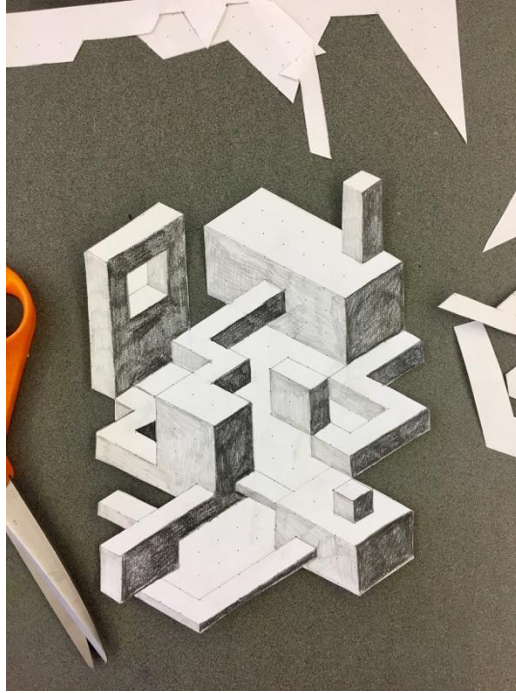


GOALS:

- Use your cover sheet to rest your hand on to prevent smudging
- Stay within the lines, but shade neatly all the way to the lines
- Layer your strokes to create smooth, even tones.
- HINT: keeping your Ebony pencil sharp will help it shade smoother!

Page 4

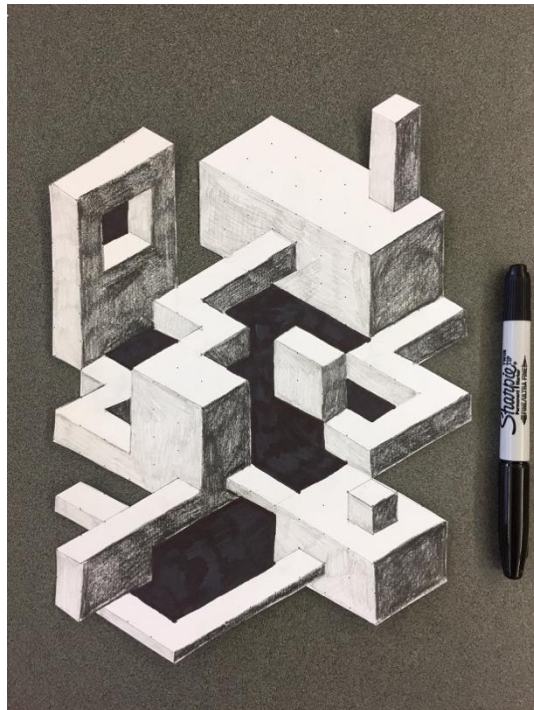
NEXT, Cut out your Isometric Space Station.



GOALS:

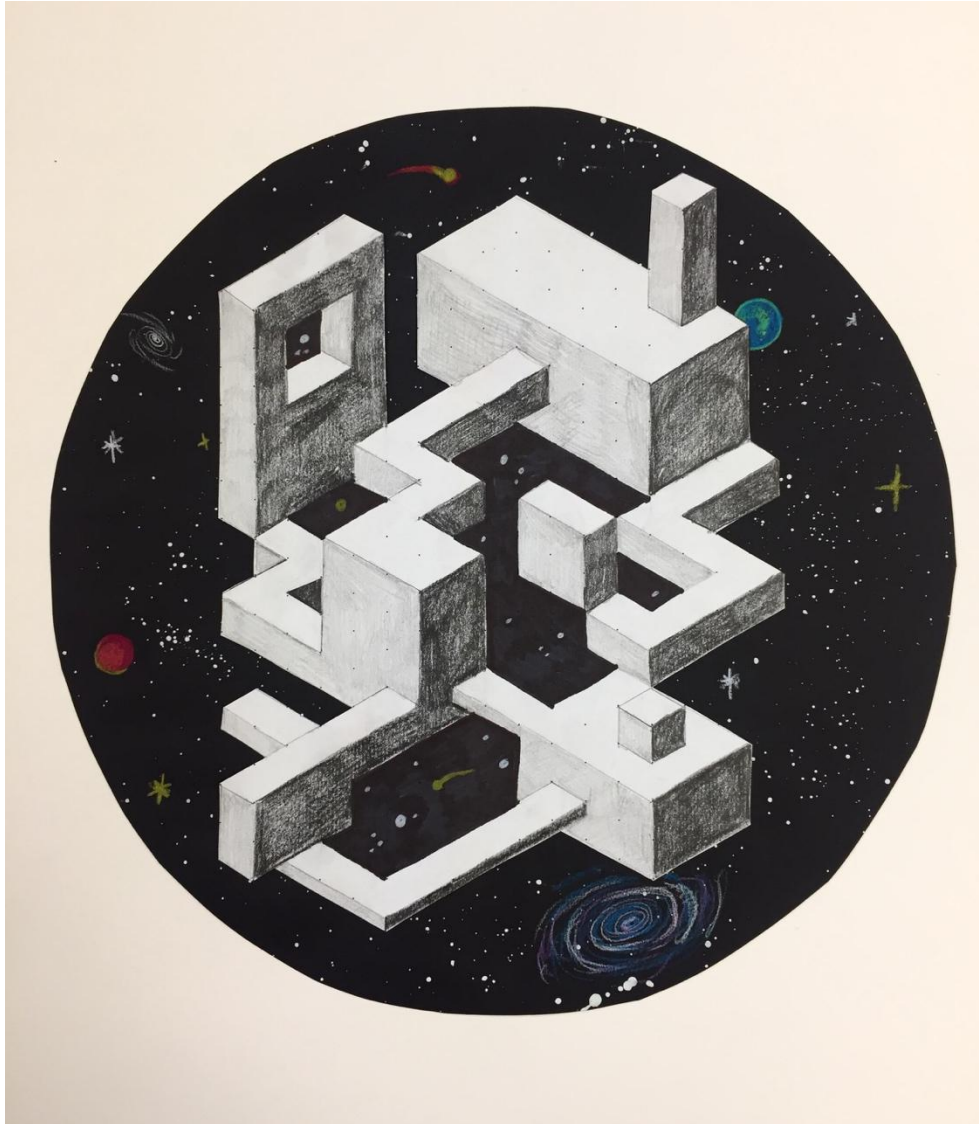
- **PRECISE, NEAT CUTTING!**

NEXT, Fill remaining areas of interior negative space with black sharpie.
Hint: it helps to outline the sections with **THIN** Sharpie, and then color it in with **THICK SHARPIE**.



NEXT, Mount your cut-out on a black circle using glue stick.

BONUS: Use color pencils to draw galaxies, planets, comets and shooting stars, AND fill in the Sharpie sections with a few stars!



GOALS:

- Your Space Station should be centered in your black circle.
- Your Space Station should be glued flat with no visible glue smears, peeling edges, or wrinkles. *HINT: work over scrap paper when applying the glue so you can go all the way to, and off, the edges.*